

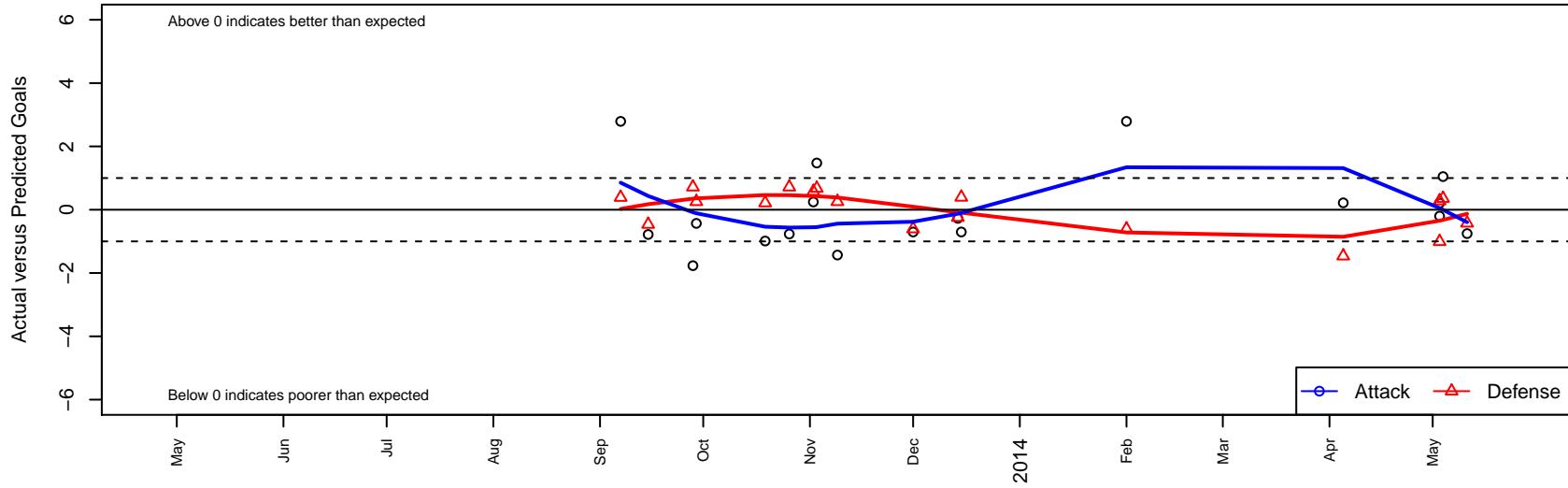
# Lonestar SC ECNL G99

, TX  
 G99 total strength=1726  
 attack=21.83 defense=28.07  
 alt names used:  
 Lonestar SC ECNL U14

Venues played:  
 ECNL U14



**Lonestar SC ECNL G99**  
 Dots are actual minus expected GF (blue circles) and GA (red triangles).  
 Blue line is smoothed change in attack strength. Red is smoothed change in defense strength.



	<b>date</b>	<b>home</b>		<b>away</b>		<b>venue</b>	<b>pred.home</b>	<b>pred.away</b>
17041	2014-05-11	Dallas Texans ECNL G99	1	Lonestar SC ECNL G99	0	ECNL U14	0.58	0.75
16992	2014-05-04	Sporting Blue Valley ECNL G99	0	Lonestar SC ECNL G99	4	ECNL U14	0.36	2.95
16928	2014-05-03	Michigan Hawks ECNL G99	2	Lonestar SC ECNL G99	1	ECNL U14	0.99	0.79
16951	2014-05-03	Lonestar SC ECNL G99	1	SLSG ECNL G99	0	ECNL U14	1.20	0.28
16565	2014-04-05	Texas Rush ECNL G99	2	Lonestar SC ECNL G99	2	ECNL U14	0.54	1.78
15883	2014-02-01	AHFC ENCL G99	1	Lonestar SC ECNL G99	4	ECNL U14	0.39	1.21
15730	2013-12-15	Lonestar SC ECNL G99	1	Dallas Sting ECNL G99	0	ECNL U14	1.70	0.39
15725	2013-12-14	Lonestar SC ECNL G99	1	D'Feeters SC ECNL G99	1	ECNL U14	1.27	0.76
15696	2013-12-01	Dallas Sting ECNL G99	1	Lonestar SC ECNL G99	1	ECNL U14	0.39	1.70
15231	2013-11-09	TSC Hurricane ECNL G99	0	Lonestar SC ECNL G99	1	ECNL U14	0.25	2.43
15140	2013-11-03	Lonestar SC ECNL G99	2	Solar Chelsea SC ECNL G99	0	ECNL U14	0.52	0.68
15024	2013-11-02	Lonestar SC ECNL G99	1	Dallas Texans ECNL G99	0	ECNL U14	0.75	0.58
14848	2013-10-26	FC Dallas ECNL G99	0	Lonestar SC ECNL G99	1	ECNL U14	0.72	1.77
14646	2013-10-19	Lonestar SC ECNL G99	1	Challenger SC ECNL G99	0	ECNL U14	1.99	0.21
14139	2013-09-29	Lonestar SC ECNL G99	2	TSC Hurricane ECNL G99	0	ECNL U14	2.43	0.25
14014	2013-09-28	Lonestar SC ECNL G99	0	FC Dallas ECNL G99	0	ECNL U14	1.77	0.72
13687	2013-09-15	Lonestar SC ECNL G99	1	Texas Rush ECNL G99	1	ECNL U14	1.78	0.54
13347	2013-09-07	Lonestar SC ECNL G99	4	AHFC ENCL G99	0	ECNL U14	1.21	0.39